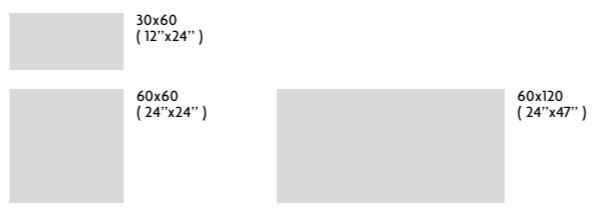




COPPER IRON

- 2** CORES
COLOURS
COULEURS
COLORES
- 3** FORMATOS
FORMATS
FORMATS
FORMATOS
- 1** ACABAMENTO
FINISH
FINITION
ACABADO

Tons metalizados, para ambientes modernos.
 Metallic tint for modern environments.
 Des tons métallisés pour des environnements modernes
 Tonos metalizados, para ambientes modernos.



NAT · RECT



COPPER · IRON

COPPER · IRON



METALLIC

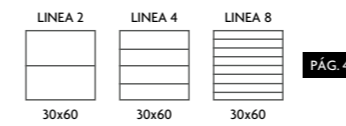
METALLIC

PEÇAS · PIECES		CAIXA · BOX			EUROPALETE · EUROPALLET			
		Espeçura (mm) Thickness (mm)	Nº Peças No Pieces	M² Aprox. No of Sq. M. Approx.	Peso (Kg) Weight Kg	Nº Caixas No Boxes	M² Aprox. No of Sq. M. Approx.	Peso (Kg) Weight (Kg)
30x60 cm	NAT	± 8,5 ±5%	8	1.44	28.8	32	46.08	943
	RECT	± 8,5 ±5%	8	1.44	28.8	32	46.08	943
60x60 cm	RECT	± 8,5 ±5%	4	1.44	28.7	36	51.84	1053
60x120 cm	RECT	± 9,8 ±5%	2	1.44	33.0	30	43.20	1011



DG	NAT	RECT	RB	NAT	RECT	DG CF	RECT	DG CF CANTO	RECT
30x30 cm	P08	P10	9,5x30 cm	P07	P08	30x60 cm	P157	30x60 cm	P207
30x60 cm	P18	P18	8x60 cm	P10	P12				
60x60 cm	-	P36	8x120 cm	-	P28				
30x120 cm	-	P97							
60x120 cm	-	P167							

DG CF / DG CF CANTO: Peças produzidas sob encomenda.
 DG CF / DG CF CANTO: Pieces produced on order.
 DG CF / DG CF CANTO: Pièces produites sur commande.
 DG CF / DG CF CANTO: Piezas producidas por encargo.
 DG CF CANTO: Disponível em canto esquerdo e direito.
 DG CF CANTO: Available in left and right corner.
 DG CF CANTO: Disponible en angle gauche et droit.
 DG CF CANTO: Canto izquierdo y derecho disponibles.

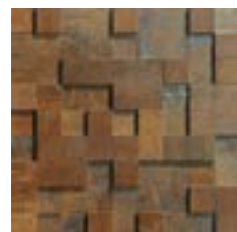


COPPER

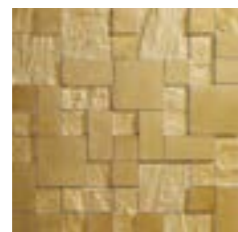
30x60	NAT	[...x0,85 cm]	P85
	RECT	[29,5x59,2x0,85 cm]	P95
60x60	RECT	[59,2x59,2x0,85 cm]	P111
60x120	RECT	[59,2x118,6x0,98 cm]	P139

IRON

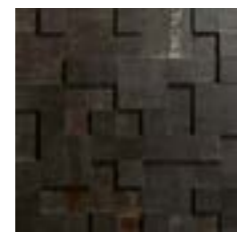
30x60	NAT	[...x0,85 cm]	P85
	RECT	[29,5x59,2x0,85 cm]	P95
60x60	RECT	[59,2x59,2x0,85 cm]	P111
60x120	RECT	[59,2x118,6x0,98 cm]	P139



STEP COPPER (a)
 30x30x0,85 P29 /peça_pieza
 [1m² = 11 peças_pieces]



STEP GOLD (a)
 30x30x0,85 P97 /peça_pieza
 [1m² = 11 peças_pieces]



STEP IRON (a)
 30x30x0,85 P29 /peça_pieza
 [1m² = 11 peças_pieces]



STEP SILVER (a)
 30x30x0,85 P97 /peça_pieza
 [1m² = 11 peças_pieces]

NAT	V3	3
RECT	V3	3

revigres

revigres



IRON
STEP IRON