



# SHAPE

**5** CORES  
COLOURS  
COULEURS  
COLORES

**1** FORMATO  
FORMAT  
FORMAT  
FORMATO

**1** ACABAMENTO  
FINISH  
FINITION  
ACABADO

Movimentos discretos de luz e sombra em revestimentos cerâmicos para espaços interiores.

Gentle motion of light and shadow of indoor ceramic wall tiles.

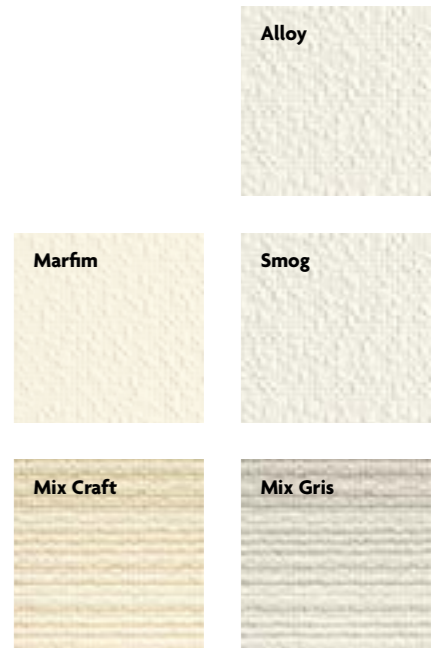
Mouvements discrets d'ombre et de lumière sur les revêtements céramiques pour les espaces intérieurs.

Movimientos discretos de luz y sombra en revestimientos cerámicos para espacios interiores.

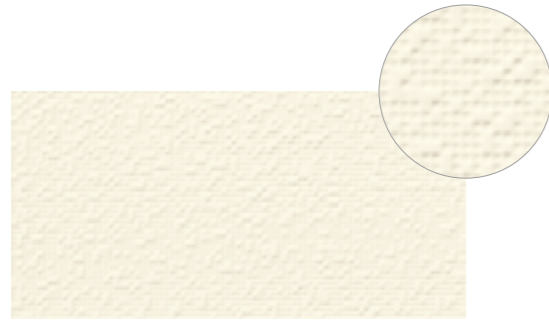


30x60  
(12"x24")

RECT



# SHAPE



## SHAPE MARFIM (\*)

30x60 RECT [29,5x59,2x0,90 cm] P80



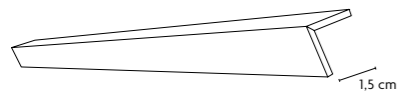
## SHAPE ALLOY (\*)

30x60 RECT [29,5x59,2x0,90 cm] P80



## SHAPE SMOG (\*)

30x60 RECT [29,5x59,2x0,90 cm] P80



### PERFIL

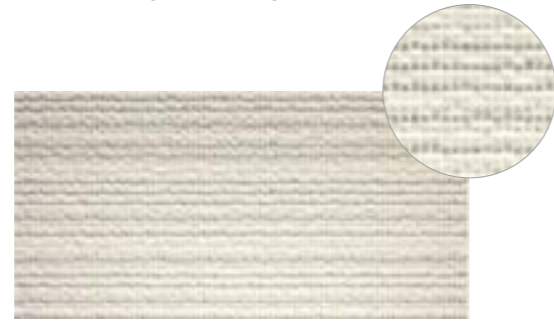
1,5x30 RECT [1,5x29,5x0,90 cm] P20 /peça\_pieza  
1,5x60 RECT [1,5x59,2x0,90 cm] P32 /peça\_pieza

PERFIL: produzido de acordo com quantidades mínimas de 10 peças.  
PERFIL: produced in minimum quantities of 10 pieces.  
PERFIL: produites selon des quantités minimales de 10 pièces.  
PERFIL: producidas en cantidades mínimas de 10 piezas.



## SHAPE MIX CRAFT (\*)

30x60 RECT [29,5x59,2x0,90 cm] P80

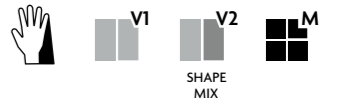


## SHAPE MIX GRIS (\*)

30x60 RECT [29,5x59,2x0,90 cm] P80



# SHAPE



| PEÇAS · PIECES |                                  | CAIXA · BOX           |                                   |                        | EUROPALETE · EUROPALLET |                                   |                          |     |
|----------------|----------------------------------|-----------------------|-----------------------------------|------------------------|-------------------------|-----------------------------------|--------------------------|-----|
|                | Espessura (mm)<br>Thickness (mm) | Nº Peças<br>No Pieces | M² Aprox.<br>No of Sq. M. Approx. | Peso (Kg)<br>Weight Kg | Nº Caixas<br>No Boxes   | M² Aprox.<br>No of Sq. M. Approx. | Peso (Kg)<br>Weight (Kg) |     |
| 30x60 cm       | RECT                             | ± 9,0 ±5%             | 8                                 | 1.44                   | 23.2                    | 32                                | 46.08                    | 763 |



(\*) Dado o efeito deste produto, as peças devem ser aplicadas sempre no mesmo sentido, seguindo a orientação do dorso.

(\*) Given the effect of the product, tiles must always be laid out facing same direction, following the orientation of the back.

(\*) En raison de l'effet de ce produit, les carreaux doivent toujours être posés dans le même sens, en suivant l'orientation de sa face interne.

(\*) Dado el efecto de este producto, las piezas deben aplicarse siempre en el mismo sentido, siguiendo la orientación del dorso.